

EETI WinCE Touch Driver Installation Guide

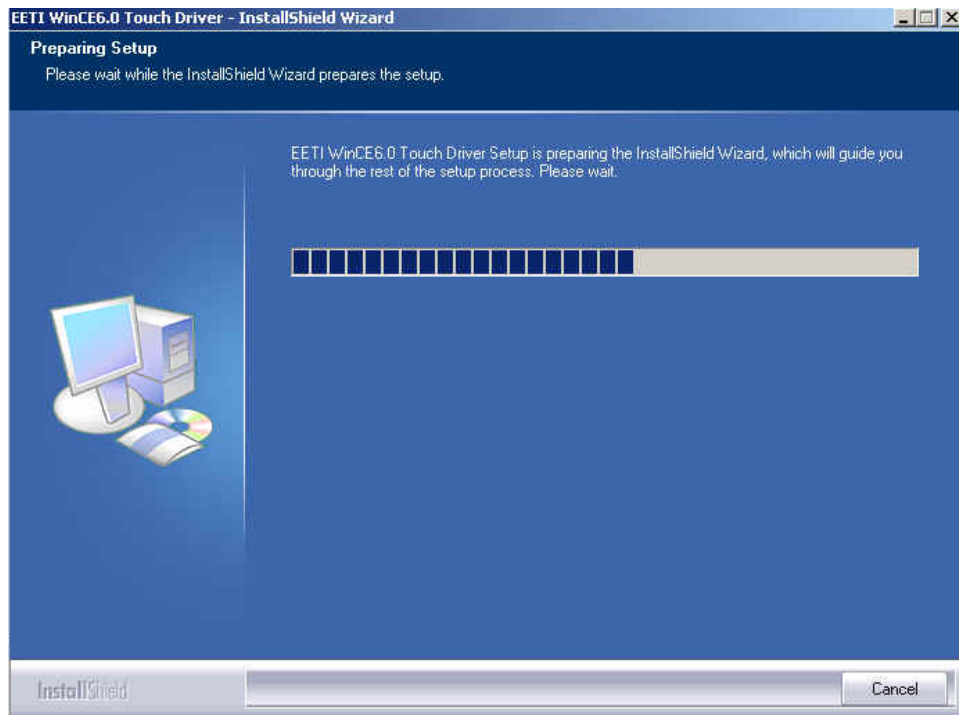
Version: 3.0.2.7108

Operation System: Windows CE .6.0

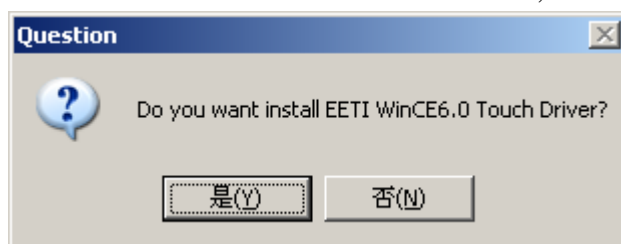
Controller: PS/2

Release Date: 1-5-2006

1. Execute setup.exe, you will see the installation window.

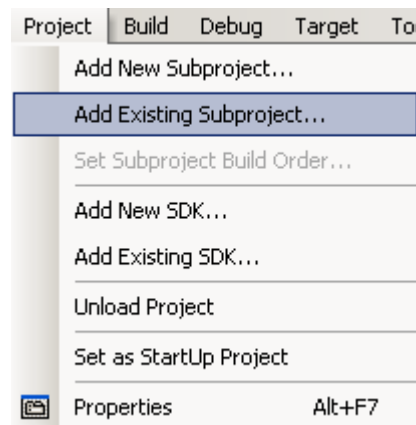


2. Select Yes to continue the installation, or select No to cancel it.

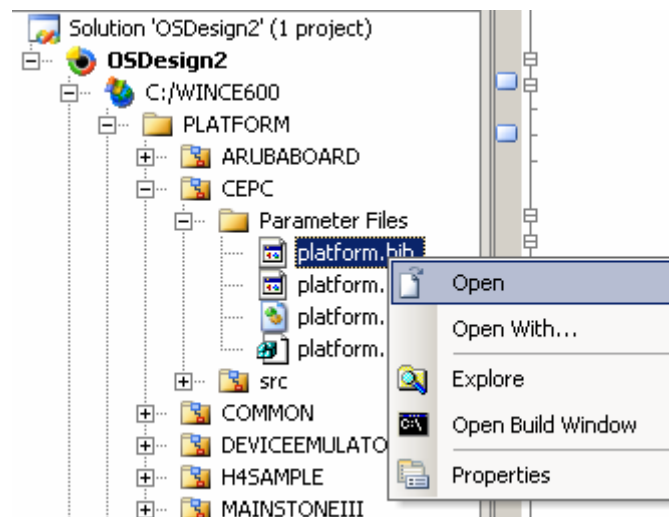


3. When installation successfully finish, please click Finish to close the installation window.
4. Launch Visual Studio 2005 with Platform Builder WinCE6.0. Open your OSDesign which you want to install EETI Touch Driver.

5. Select Project → Add Existing Subproject



6. **[NOTICE]** Open your platform.bib under your OSDesign. Find where your original kbdmouse.dll setting and remove it. (If you are not sure which one is current setting, you can also marked all the settings for kbdmouse.dll)



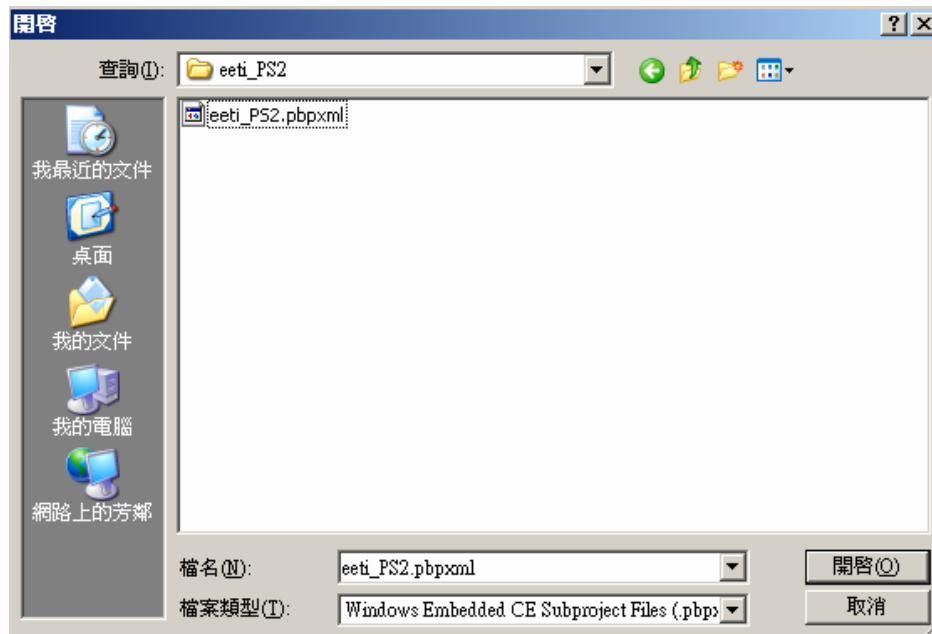
```

IF LOCALE=0412 !
  IF BSP_KEYBD_NOP
    ; @CESYSGEN IF CE_MODULES_NOPKEYBOARD
      kbdmouse.dll          $( _FLATRELEASEDIR )\Kbd8042US.dll
    ; @CESYSGEN ENDIF CE_MODULES_NOPKEYBOARD
  ENDIF BSP_KEYBD_NOP
  IF BSP_KEYBD_NOP !
    ; @CESYSGEN IF CE_MODULES_8042KEYBOARD
      kbdmouse.dll          $( _FLATRELEASEDIR )\Kbd8042US.dll          NK SHK
    ; @CESYSGEN ENDIF CE_MODULES_8042KEYBOARD
  ENDIF BSP_KEYBD_NOP
ENDIF LOCALE=0412 !

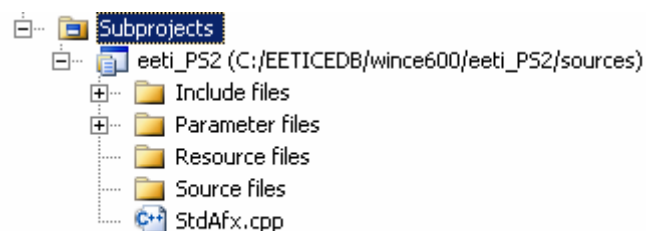
```

Mark the setting for your platform. You can mark all the settings for kbdmouse.dll

7. Switch the folder to C:\EETICEDB\wince600\ eeti_PS2 and select eeti_PS2.pbpxml



8. You will see the subproject after you add in your OSDesign



9. Build → Build All Subprojects
10. Build → Build <your OSDesign>
11. After build process is success, please check the ce.bib (the file is located at the same folder as your NK.bin). Please make sure there is only one kbdmouse.dll setting in ce.bib. Other setting for kbdmouse.dll should be marked.

;eeti_PS2 bib setting

kbdmouse.dll C:\EETICEDB\wince600\CEPC\Kbd8042US.dll NK SHK

Notes:

1. You can modify registry setting as described below:

[For TouchKit tool] Modify eetiTool.reg:

[HKEY_LOCAL_MACHINE\Drivers\TouchKit]

"RBSIZE"=dword:800 → set scale that will be treated as the same point

$x\text{-coordinate regin(pixel)} = (\text{RBSize} / 65535) * x\text{-coordinate resolution}$

set RBSize = 0 can disable right button

"RBTIME"=dword:FFFFFF → set how long the same point pressed will
treated as right button. The unit is 10^{-7} second.

"FLAGS"=dword:1 → set 0x1 software filter enable

set 0x3000 update eeprom funtion enable

set 0x100 to enable the check rotation function

"BeepFrequence"=dword:1F4 → Beep Frequence(x86 only)

"BeepTime"=dword:64 → Beep Times(ms)(x86 only)

"ZFilterThreshold"=dword:800

"ZFilterBound"=dword:00100001

"SoundType"=dword:0 → This is the default sound type.

SoundType = 0 is no sound

SoundType = 1 is Beep in touch down.

SoundType = 2 is Beep in lift off.

"NoPostRange"=dword:80

"SECDisable"=dword:1

2. You can uninstall the catalog items in platform builder by execute setup.exe again.